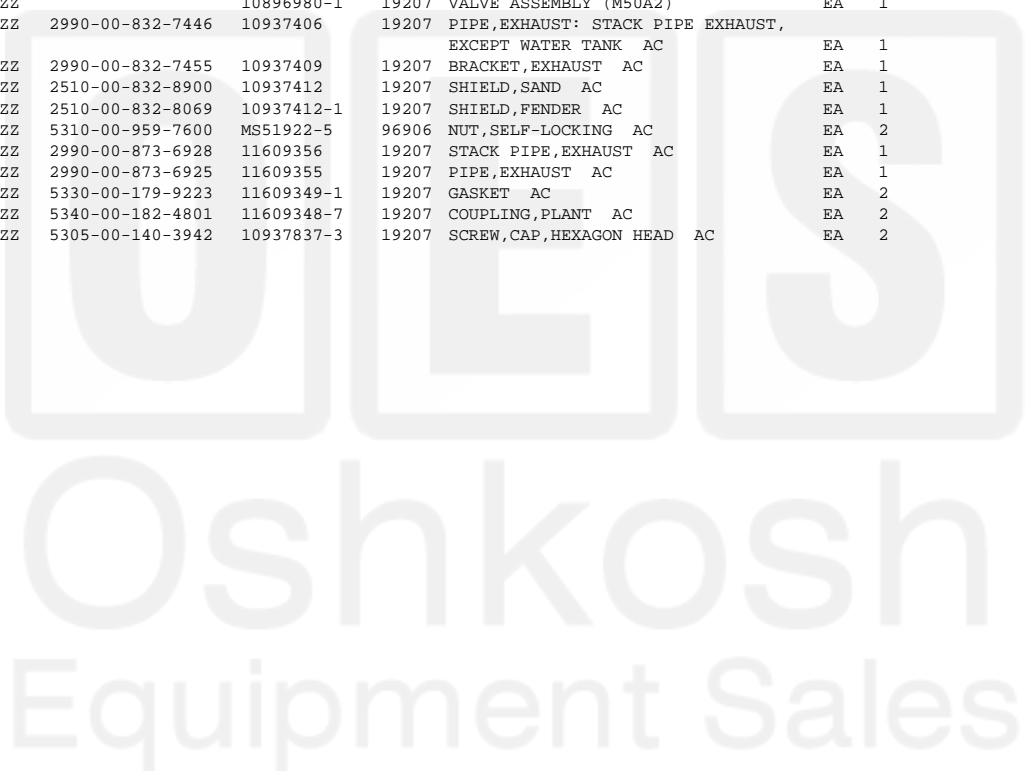


Current part is item (35) on diagram. Available at [www.oshkoshequipment.com](http://www.oshkoshequipment.com)

(1) (a) FIG. NO.	(2) (b) ITEM NO.	(3) SMR CODE	(4) NATIONAL STOCK NUMBER	(5) PART NUMBER	(6) DESCRIPTION FSCM USABLE ON CODE	(7) U/M	(8) INC IN UNIT
0401-MUFFLER AND PIPES (CONT'D)							
45	39	XAOZZ		10872170	19207 BODY AND DAMPER (M50A1)	EA	1
45	40	XAOZZ		10872171	19207 BODY AND PIPE (M50A1)	EA	1
45	41	PAOOO	2990-00-908-6280	10896975-1	19207 VALVE, EXHAUST BY-PASS (M50A2)	EA	1
45	42	PAOZZ	5310-00-959-7600	MS51922-5	96906 NUT, SELF-LOCKING (M50A2)	EA	8
45	43	PAOZZ	5305-00-267-8974	MS90726-8	96906 SCREW, CAP, HEXAGON HEAD (M50A2)	EA	8
45	44	PAOZZ	5360-00-200-8981	8330121	19207 SPRING, HELICAL: BY-PASS VALVE DAMPER (M50A2)	EA	1
45	45	PAOZZ	5310-00-982-4908	MS21045-6	96906 NUT, SELF-LOCKING (M50A2)	EA	1
45	46	PAOZZ	5310-00-221-9743	7368549	19207 WASHER (M50A2)	EA	2
45	47	PAOZZ	5340-00-664-3532	8329898	19207 BRACKET, ANGLE: BY-PASS VALVE DAMPER (M50A2)	EA	1
45	48	PAOZZ	5310-00-067-9507	MS51922-37	96906 NUT, SELF-LOCKING (M50A2)	EA	1
45	49	PAOZZ	5315-00-815-1405	MS24665-151	96906 PIN, COTTER (M50A2)	EA	1
45	50	PAOZZ	2990-00-968-0033	10896700	19207 SWIVEL, WIRE STOP: EXHAUST PIPE BY-PASS VALVE (M50A2)	EA	1
45	51	XDOZZ		10897010	19207 LEVER (M50A2)	EA	1
45	52	XDOZZ		7368550	19207 WASHER (M50A2)	EA	1
45	53	XDOZZ		10897007	19207 COVER (M50A2)	EA	1
45	54	XDOZZ		10897008	19207 GASKET (M50A2)	EA	1
45	55	XAOZZ		10897006	19207 DAMPER (M50A2)	EA	1
45	56	XAOZZ		10896980-1	19207 VALVE ASSEMBLY (M50A2)	EA	1
46	1	PAOZZ	2990-00-832-7446	10937406	19207 PIPE, EXHAUST: STACK PIPE EXHAUST, EXCEPT WATER TANK AC	EA	1
46	2	PAOZZ	2990-00-832-7455	10937409	19207 BRACKET, EXHAUST AC	EA	1
46	3	PAOZZ	2510-00-832-8900	10937412	19207 SHIELD, SAND AC	EA	1
46	4	PAOZZ	2510-00-832-8069	10937412-1	19207 SHIELD, FENDER AC	EA	1
46	5	PAOZZ	5310-00-959-7600	MS51922-5	96906 NUT, SELF-LOCKING AC	EA	2
46	6	PAOZZ	2990-00-873-6928	11609356	19207 STACK PIPE, EXHAUST AC	EA	1
46	7	PAOZZ	2990-00-873-6925	11609355	19207 PIPE, EXHAUST AC	EA	1
46	8	PAOZZ	5330-00-179-9223	11609349-1	19207 GASKET AC	EA	2
46	9	PAOZZ	5340-00-182-4801	11609348-7	19207 COUPLING, PLANT AC	EA	2
46	10	PAOZZ	5305-00-140-3942	10937837-3	19207 SCREW, CAP, HEXAGON HEAD AC	EA	2



Current part is item (35) on diagram. Available at [www.oshkoshequipment.com](http://www.oshkoshequipment.com)

Current part is item (35) on diagram. Available at [www.oshkoshequipment.com](http://www.oshkoshequipment.com)

(1) (a) FIG. NO.	(2) (b) ITEM NO.	(3) SMR CODE	(4) NATIONAL STOCK NUMBER	(5) PART NUMBER	(6) DESCRIPTION FSCM USABLE ON CODE	(7) U/M	(8) INC IN UNIT
0401-MUFFLER AND PIPES (CONT'D)							
46	11	PAOZZ	5310-00-139-4627	11609727-1	19207 NUT AC	EA	2
46	12	PAOZZ	5310-00-930-9095	10937657	19207 NUT,SELF,LOCKING AC	EA	1
46	13	PAOZZ	5330-00-066-2551	10935281	19207 GASKET: EXHAUST MANIFOLD TOP ELBOW AC	EA	5
46	14	PAOZZ	4730-00-066-8876	10896628	19207 ELBOW,EXHAUST: ENGINE MOUNTED AC	EA	1
46	15	XBOZZ	5310-00-850-3892	10898732	19207 NUT,SELF-LOCKING AC	EA	2
46	16	PAOZZ	5306-00-737-2758	7372758	19207 BOLT,MACHINE AC	EA	5
46	17	PAOZZ	5330-00-908-6277	10896968	19207 GASKET: EXHAUST ELBOW TO PIPE AC	EA	1
46	18	PAOZZ	2990-00-873-6927	11609357	19207 PIPE,EXHAUST: MUFFLER INTAKE AC	EA	1
46	19	PAOZZ	5310-00-176-6690	11609727-2	19207 NUT,SELF-LOCKING AC	EA	1
46	20	PAOZZ	5340-00-947-2396	MS27166-178	96906 COUPLING AC	EA	1
46	21	PAOZZ	5306-00-182-9365	10937837-2	19207 BOLT,MACHINE AC	EA	1
46	22	PAOZZ	5330-00-127-5417	11609349-2	19207 GASKET	EA	1
46	23	PAOZZ	2990-00-873-6924	11609350	19207 MUFFLER,EXHAUST: REVERSE FLOW AC	EA	1
46	23	PAOZZ	2990-00-832-7450	11601168	19207 MUFFLER,EXHAUST (M49A2C,M275A2) AC	EA	1
46	24	PAOZZ	5340-00-832-7914	10937404-1	19207 CLAMP,LOOP: MUFFLER SUPPORT AC	EA	1
46	24	PAOZZ	5340-00-832-7915	10937404-2	19207 CLAMP,LOOP: MUFFLER SUPPORT (M49A2C,M275A2) AC	EA	1
46	25	PAOZZ	5305-00-269-2804	MS90726-61	96906 SCREW,CAP,HEXAGON HEAD AC	EA	1
46	26	PAOZZ	5305-00-269-2806	MS90726-63	96906 SCREW,CAP,HEXAGON HEAD AC	EA	2
46	27	PAOZZ	5310-00-984-3807	MS51922-13	96906 NUT,SELF-LOCKING AC	EA	2
46	28	PAOZZ	5340-00-782-1233	10937869	19207 BRACKET,ANGLE AC	EA	1
46	29	PAOZZ	5305-00-225-9091	MS90726-36	96906 SCREW,MACHINE AC	EA	2
46	30	PAOZZ	2990-00-782-1232	10937868-1	19207 STRAP: MUFFLER SUPPORT AC	EA	1
46	30	PAOZZ	5365-00-230-4271	10937868-2	19207 STRAP: MUFFLER SUPPORT (M49A2C, M275A2) AC	EA	1
46	31	PAOZZ	5365-00-020-8588	10913176	19207 MOUNT,RESILIENT: MUFFLER AC	EA	2
46	32	PAOZZ	5310-00-809-4061	MS27183-15	96906 WASHER,FLAT AC	EA	2
46	33	PAOZZ	5310-00-982-4908	MS21045-6	96906 NUT,SELF-LOCKING AC	EA	2
46	34	XBOZZ		10937397	19207 SCREW: EXHAUST FENDER SHIELD AC	EA	2
46	35	PAOZZ	2990-00-832-7454	10937401	19207 SHIELD ASSEMBLY AC	EA	1
46	36	PAOZZ	5340-00-832-7913	10937443	19207 CLAMP,LOOP: STACK PIPE RETAINING AC	EA	2
46	37	PAOZZ	5310-00-984-3807	MS51922-13	96906 NUT,SELF-LOCKING AC	EA	4
46	38	XAOZZ		7529239-1	19207 U-BOLT AC	EA	2



Current part is item (35) on diagram. Available at [www.oshkoshequipment.com](http://www.oshkoshequipment.com)

Current part is item (35) on diagram. Available at [www.oshkoshequipment.com](http://www.oshkoshequipment.com)

(1) (a) FIG. NO.	(2) (b) ITEM NO.	(3) SMR CODE	(4) NATIONAL STOCK NUMBER	(5) (6) PART NUMBER	(7) FSCM	(8) DESCRIPTION USABLE ON CODE	(9) U/M	(10) INC IN UNIT
4041-MUFFLER AND PIPES (CONT'D)								
46	39	XAOZZ		10937403	19207	BRACKET AC	EA	2
46	NI	PAOZZ	5330-00-899-4481	10889768	19207	GASKET: TURBO SUPERCHARGER EXHAUST ELBOW INNER AB	EA	1
46	NI	PAOZZ	2990-00-860-2335	7748883	19207	ELBOW,EXHAUST: TURBO SUPERCHARGER AB	EA	1
46	NI	PAOZZ	5330-00-899-4482	10889769	19207	GASKET AB	EA	1
NOTE: THE FOLLOWING 29 ITEMS ARE USED ON M44A2 SERIES TRUCKS, WITH THE EXCEPTION OF MODELS M50A2 AND M50A3.								
47	1	PAOZZ	5306-00-225-9094	MS90726-39	96906	BOLT,MACHINE: COUPLING TO EXHAUST PIPES	EA	3
47	2	PAOZZ	5340-00-194-1665	11609348-10	19207	COUPLING: EXHAUST PIPE	EA	3
47	3	PAOZZ	5330-00-127-5417	11609349-2	19207	GASKET: EXHAUST PIPE AND EXHAUST FLEX TUBE	EA	3
47	4	PAOZZ	2990-00-104-2836	11677091	19207	PIPE,EXHAUST	EA	1
47	5	PAOZZ	5310-00-176-6690	11609727-2	19207	NUT,SELF-LOCKING	EA	6
47	6	PAOZZ	5340-00-097-6399	11677122	19207	BRACKET: EXHAUST SHIELD TO EXHAUST PIPE	EA	2
47	7	PAOZZ	5310-00-139-4627	11609727-1	19207	NUT,SELF-LOCKING	EA	6
47	8	PAOZZ	2990-00-104-2895	11677118	19207	SUPPORT,EXHAUST	EA	1
47	9	PAOZZ	2990-00-104-2896	11677120	19207	BRACE,EXHAUST SUPPORT	EA	1
47	10	PAOZZ	5310-00-637-9541	MS35338-46	96906	WASHER,LOCK	EA	1
47	11	PAOZZ	5305-00-269-2808	MS90726-65	96906	SCREW,CAP,HEXAGON HEAD	EA	1
47	12	PAOZZ	5340-00-097-6512	11676955	19207	CLAMP ASSEMBLY: EXHAUST SHIELD	EA	1
47	13	PAOZZ	5340-00-054-3173	11677063	19207	PLATE,COVER	EA	2
47	14	PAOZZ	5310-00-809-3078	MS27183-11	96906	WASHER,FLAT	EA	4
47	15	PAOZZ	5310-00-081-4219	MS27183-12	96906	WASHER,FLAT	EA	4
47	16	PAOZZ	5340-00-097-6456	11677121	19207	BRACKET: MANIFOLD PIPE	EA	1
47	17	PAOZZ	5306-00-225-9089	MS90726-34	96906	BOLT,MACHINE	EA	2
47	18	PAOZZ	5340-00-097-6915	11676872-3	19207	CLAMP: MANIFOLD PIPE BRACKET	EA	1
47	19	PAOZZ	2990-00-104-2861	11663019	19207	TUBE,EXHAUST FLEX	EA	1
47	20	PAOZZ	2990-00-104-2794	11677093	19207	ELBOW ASSEMBLY: EXHAUST MANIFOLD	EA	1
47	21	PAOZZ	5330-00-106-8555	11677119	19207	GASKET: EXHAUST MANIFOLD ELBOW	EA	1
47	22	PAOZZ	5340-00-092-6372	MS27116-15B	96906	COUPLING: EXHAUST MANIFOLD ELBOW	EA	1
47	23	PAOZZ	5310-00-959-1488	MS51922-21	96906	NUT,SELF-LOCKING	EA	1



Current part is item (35) on diagram. Available at [www.oshkoshequipment.com](http://www.oshkoshequipment.com)

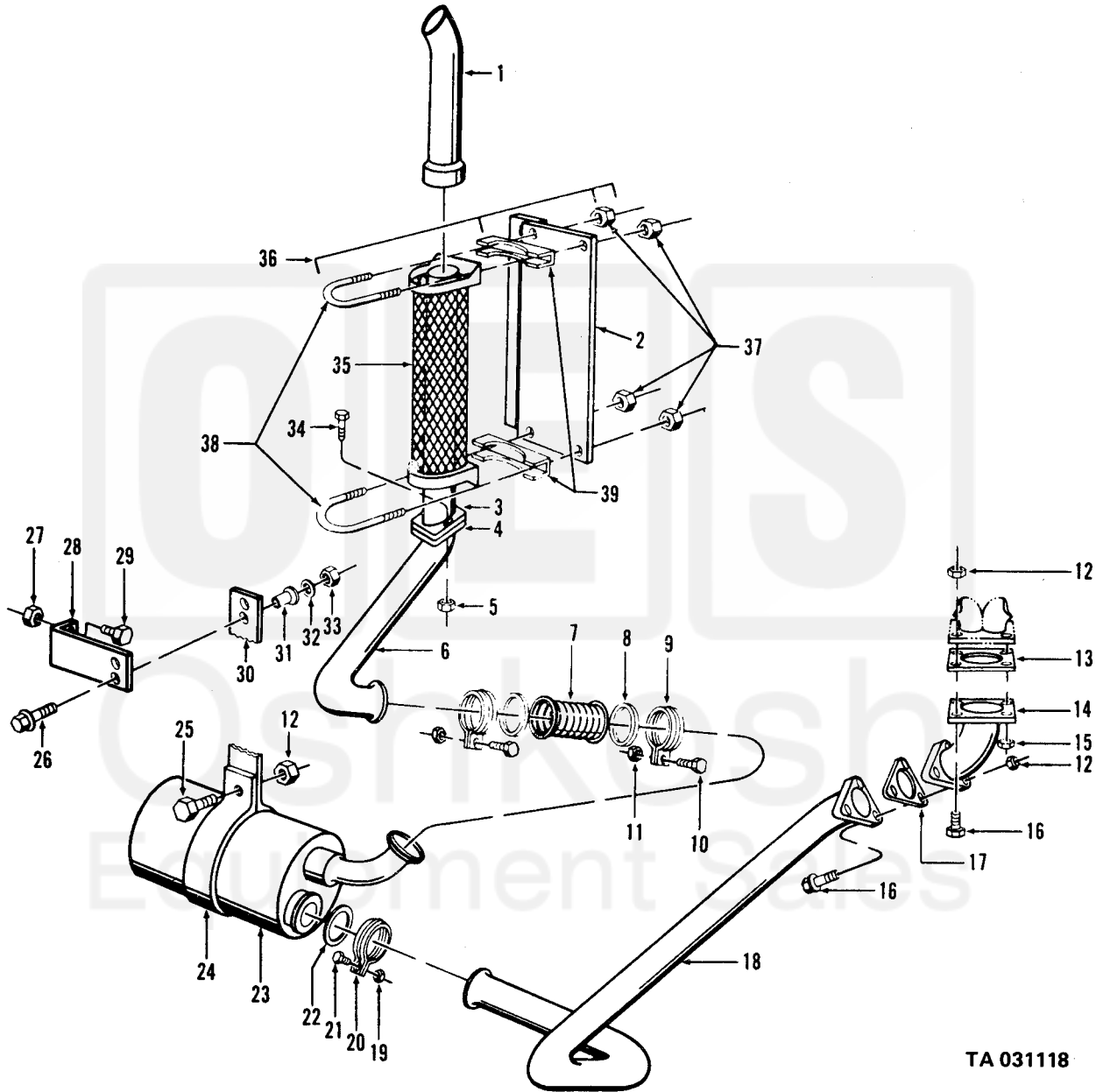


Figure 46. Engine exhaust pipes and stack pipe mounting (multifuel).